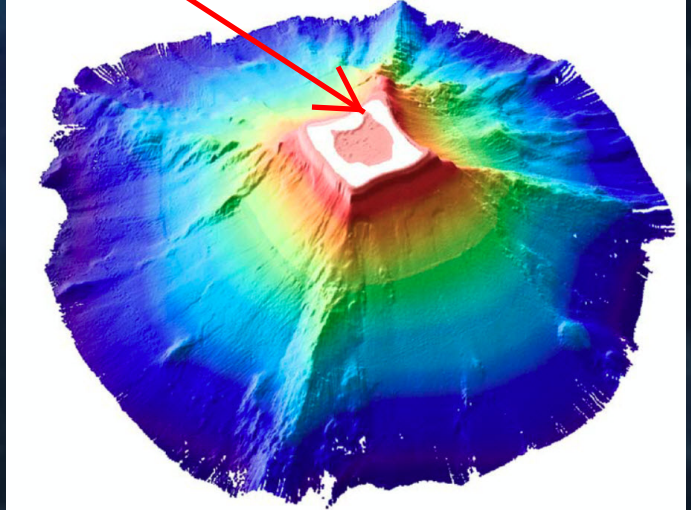


# Rose Atoll

Rose Atoll lies within the U.S. territory of American Samoa. It is a wildlife refuge and no humans inhabit it. The refuge is the Rose Atoll Marine National Monument, and it is managed by the U.S. Fish & Wildlife Service in cooperation with the Samoan government. It is known for its large population of giant clams and is a critical nesting habitat for the threatened green sea turtle and the endangered hawksbill turtle (wikipedia; Carol Ray).



Picture from: [https://www.researchgate.net/publication/247151791\\_Rose\\_Atoll\\_National\\_Wildlife\\_Refuge\\_Research\\_Compodium](https://www.researchgate.net/publication/247151791_Rose_Atoll_National_Wildlife_Refuge_Research_Compodium)

Google Earth

Data LDEO-Columbia, NSF, NOAA  
Data NOAA  
Image © 2017 DigitalGlobe

3 mi

